

Acronis[®] Disk Director[®] 11

Advanced Workstation

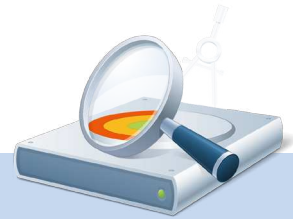
Advanced Server

Maximize the performance of your servers or workstations with powerful partition and hard disk drive management utilities.

Acronis Disk Director 11 Advanced Server and Advanced Workstation provide powerful partition and hard disk drive management utilities to ensure your systems are running efficiently. Built upon award-winning technologies from Acronis, the products minimize downtime for maintenance and provide maximum server performance of your mission critical applications.

Dynamically split, merge, resize, copy and move partitions within Windows, minimizing downtime. Perform advanced hard disk drive editing tasks, such as recovering important data areas of a hard drive; search and/or extract information that was lost due to different soft- and hardware failures or virus attack. All actions are put in a pending state until the servers are rebooted. Thus, you can make changes to servers during business hours and wait until after-hours to commit changes, minimizing user disruption.

Moreover, these products are ideal companions to Acronis Backup & Recovery 10. Use Acronis Disk Director 11 Advanced Server and Advanced Workstation to manage volumes and maximize system performance, such as freeing up unused free space from one partition and transferring to another. Then, use Acronis Backup & Recovery 10 to backup an entire server or workstation, enabling recovery in minutes without any reinstallation of the applications, operating systems and server or workstation configurations.



Main Features

New! Windows[®] 7 and Windows 2008 and Windows 2008 R2 support

Resize, move, copy, split, and merge volumes without losing your data

Create, convert, copy and move volumes

New! Dynamic Disk Support*

New! GPT disk support

New! Add or break mirrored volumes*

New! Span volume across multiple physical disks

New! Convert basic disk to GPT and vice versa

Boot from CD/DVD or USB stick

New! Clone disk to a replacement HDD

Recover lost or deleted partitions

No reboot during installation

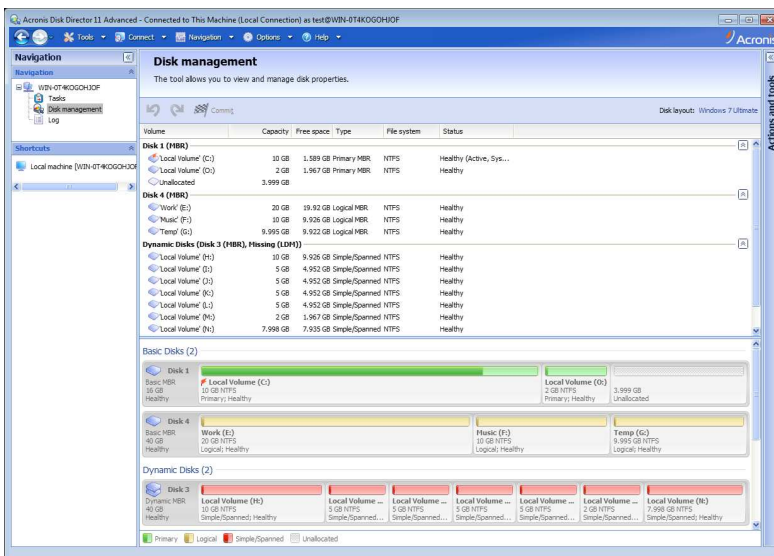
Works with Acronis[®] Backup & Recovery[™] 10

New! Repair RAID-5 column

New! Remote management

New! WinPE media

(*) for supported operating systems



View and manage disk properties

Feature	Description
New! Manage all disks and volumes with extreme flexibility	Carry out a vast array of disk and volume management operations: <ul style="list-style-type: none"> • Resize, move, copy, split and merge volumes without data loss or destruction • Format and label volumes, assign volume letters and set volumes active
New! Dynamic Disk Support*	Spread volumes over several disks
New! GPT disk support	Use with GPT disks to create volumes over 2TB and get additional disk reliability against possible data damage
New! Add, remove or break mirrored volumes*	Make your basic or simple volume fault-tolerant in just one action by adding a mirror. If you need extra unallocated space on a disk containing one of the mirrors, remove a mirror
New! Span volume across multiple physical disks	Optimize your system by combining free space on different hard disk drives and get larger volume
Ease of Use	Intuitive interface and wizards guide you to get the most out of your system
Command Line Interface	Create scripts for application tasks
Remote Management	Powerful and easy-to-use tool for managing disks and volumes on local and remote machines
New! Convert basic disks to Dynamic Disks and vice versa	Convert existing basic disks to Dynamic Disks to achieve additional disk reliability for data storage
New! Convert MBR disks to GPT and vice versa	Why would you need to convert an MBR disk to a GPT basic disk? <ul style="list-style-type: none"> • If you need to make a volume who size is over 2TB • If you need more than four primary volumes on one disk
Boot from CD/DVD or USB stick	Boot from a CD/DVD or USB stick and manage all your volumes
New! Clone disks to a replacement HDD	The Disk Cloning wizard lets you replace the old basic MBR disk with a new one without reinstalling operating systems and applications
Disk Editor	Edit disk at the sector level
Recover lost or deleted partitions	Acronis Recovery Expert helps you to recover accidentally lost or deleted volumes on basic MBR disks

* For operating systems that support this feature

Supported Operating Systems

Acronis Disk Director 11 Advanced Server

- Windows Server 2003 and 2003 R2 (all editions, including SBS)
- Windows Server 2008 and 2008 R2 (all editions, including SBS)

Acronis Disk Director 11 Advanced Workstation

- Windows XP (all editions)
- Windows Vista (all editions)
- Windows 7 (all editions)

Supported File Systems

- FAT16, FAT32, NTFS
- Ext2, Ext3, ReiserFS3, Linux SWAP
- Special sector-by-sector support for copying and moving partitions of any other type



Hardware Requirements	Minimum Requirements	Recommended
Boot Firmware	Bios-based**	
Computer Processor	Modern processor, 800MHz or faster	1GHz 32-bit or 64-bit X86 processor
System memory	512MB	1GB or more
Screen Resolution	800x600 pixels	1024x768 or higher
Installation Disk Space	2GB	
Other hardware	Mouse	CD/DVD recording drive, or a flash drive, for bootable media creation

** Machines that are based on Extensible Firmware Interface (EFI) are not supported



For additional information, please visit <http://www.acronis.com/>

Enterprise/SMB sales:
Call +1 877 669-9749

OEM inquiries:
Call +1 781 222-0920

Copyright © 2000-2010 Acronis, Inc. All rights reserved. "Acronis", "Disk Director" and the Acronis logo are trademarks of Acronis, Inc. Windows is a registered trademark of Microsoft Corporation. Other mentioned names may be trademarks or registered trademarks of their respective owners and should be regarded as such. Technical changes and differences from the illustrations are reserved; errors are excepted. 2010-09